

TALE FEATHERS

St. Louis Audubon Society, P.O. Box 220227, St. Louis, MO 63122-0227
www.stlouisaudubon.org ~ operations.stlaudubon@gmail.com (314) 687-3942

Calendar

BEGINNER BIRD WALK FIELD TRIPS

FOREST PARK VISITOR CENTER AT 5595 GRAND DRIVE
1ST SATURDAY MOST MONTHS; 830 AM TO 10 AM,
MEET 815 AM; FOR INFO CONTACT AMY AT
BIRDING@FORESTPARKFOREVER.ORG

BIRDING FIELD TRIP

BUSCH GREENWAY, BLUE GROSBEAK TRAIL
SATURDAY, SEPTEMBER 21
8 AM TO 10 AM
[MORE INFORMATION](#)

LIFE OUTSIDE FESTIVAL

GREAT RIVERS GREENWAY
SATURDAY, SEPTEMBER 21
10 AM – 4 PM
ST. VINCENT GREENWAY
[MORE INFORMATION](#)

VOLUNTEER APPRECIATION COOKOUT

SUNDAY, SEPTEMBER 22
6 PM – 8 PM
GREENSCAPE GARDENS AND GIFTS
2832 BARRETT STATION ROAD, MANCHESTER
[MORE INFORMATION](#)

NATIVE PLANT EXPO

SATURDAY, SEPTEMBER 28
9 AM – 1 PM
SCHLAFLY BOTTLEWORKS
[MORE INFORMATION](#)

FALL GAGGLE: SOMETHING TO HOOT ABOUT

BUSCH GREENWAY, BLUE GROSBEAK TRAIL
SUNDAY, OCTOBER 27
5 PM TO 8 PM
[MORE INFORMATION](#)

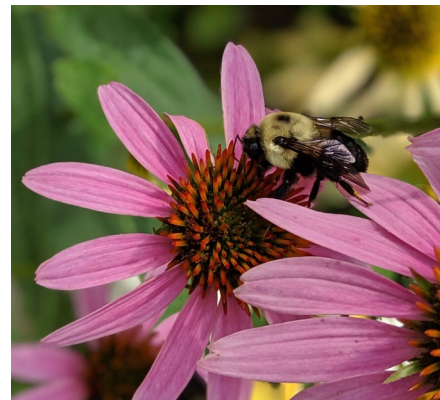
INSIDE THIS ISSUE

The Power of Partnerships	1,2
California Pizza Kitchen Fundraiser	2
From the Director	3
Fall Gaggle Award Recipients	3
In Memory of Thomas Creley	4
Native Plant Expo	5
Fall Gaggle: Something to Hoot About	6

The Power of Partnerships

We are happy to announce that St. Louis Audubon's nest has a new egg, and it's ready to hatch! As many of you who have received emails over the last couple weeks already know, The Billiken Bee Lab led by [Dr. Gerardo Camilo](#) at Saint Louis University has formed a partnership with Audubon. We want to investigate the many factors that influence the biodiversity within your yard and neighborhood. We will be focusing on three taxa, led by three researchers. [Dr. Sacha Heath](#) is a postdoctoral fellow with the [Living Earth Collaborative](#) and will be studying birds, Nina Fogel is a PhD student who will be examining bees, and Trey Hull is a PhD student who will look at vector disease transmission by studying mosquitoes.

Starting in Spring 2020 we intend to survey [Bring Conservation Home](#) enrollee's yards for bees, mosquitoes and birds to understand how this exciting conservation program is working for biodiversity.



Board Meetings

Open to All. 2nd Tuesday of Even Months at 7 pm at the Sunset Hills Community Center at 3915 S. Lindbergh Boulevard.

Board recruitment is an ongoing process and combines your interest and our need. If you have considered serving in such a way, stop by or call one of us.

Officers & Staff

Katy Fechter, President

(618) 339-7356

stlaudubonpresident@gmail.com

Jean Favara, VP Conservation

(314) 603-9468

conservation@stlouisaudubon.org

Michael Meredith, Secretary

(314) 640-4913

michael.meredith.stl@gmail.com

John Klos, Treasurer

(636) 227-0075

klos41@msn.com

Amy Weeks, Director of Operations

(314) 687-3942

operations@stlouisaudubon.org

Mitch Leachman, Director of Programs

(314) 599-7390

programs@stlouisaudubon.org

Newsletter

TaleFeathers is published monthly. For submissions, comments or corrections, contact Amy Weeks as noted above.

The Power of Partnerships

Continued from page 1

This partnership is very unique. Across the scientific literature we have found that urban ecology research tends to focus on a single taxa and researchers are often restricted to conducting their studies in public streets adjacent to yards. Through this partnership, The Billiken Bee Lab will be able to sample hundreds of yards for three animal taxa across a large east-west transect of the St. Louis metropolitan area. Because of your help, this study will give scientists a better understanding of how birds, bees and mosquitoes respond to factors at multiple scales; from the number of plant species you have in your yard, to the gardening norms in your neighborhood, and on to the composition of the larger landscape.

This research would not be possible without your help! We would like to thank the Bring Conservation Home enrollees who have signed up to participate in the research. If you would like to learn more about the research and people in The Billiken Bee Lab, come stop by our table at the Native Plant Expo and check out future newsletters for project updates. ■



Left to Right: Trey Hull, Dr. Gerardo Camilo, Dr. Sacha Heath, Nina Fogel



A sincere “**thank you**” to everyone who came out to support St. Louis Audubon Society at the California Pizza Kitchen fundraiser! We hope you had a good meal, a good time with family and friends, and feel good about supporting a great cause!

Together, we continue to make a difference for St. Louis’s native birds, wildlife and wild places!

From the Director

By Amy Weeks

Something to Hoot About...Register Now!

On October 27th, we are planning to host our 4th annual Fall Gaggle fundraising event at the Probstain Golf Course in Forest Park. Our theme this year is *Something to Hoot About* in honor of the many individuals who have demonstrated excellence in conservation, education, volunteerism, and dedication to our cause. The event proceeds will allow St. Louis Audubon to continue connecting our diverse community with nature through many inspiring programs and locally focused conservation projects.

We would love for you to join us for this important event! Please visit <http://www.stlouisaudubon.org> to register.

Silent Auction Help Needed

Not only is the Silent Auction a great fundraiser for St. Louis Audubon, but it is a great opportunity for you to acquire some amazing items, from artwork to coffee to weekend getaways! But we can use lots of help! We are continuing to look for unique items for our silent auction. If you are interested in making a Silent Auction donation, please contact Amy at (314) 687-3942 or operations.stlaudubon@gmail.com. Your support will be sincerely appreciated and acknowledgments for tax purposes will be provided.



And the award goes to...

During the Fall Gaggle each year, St. Louis Audubon recognizes individuals, organizations or groups who have made significant contributions in support of our efforts or within the conservation community. This year is no exception. We are proud to announce two of the recipients for these awards.

Outstanding Volunteer Award - Herb Huebner

Bring Conservation Home Habitat Advisor since 2015, Herb models the program's principles at home with a variety of native plant gardens. Former Vice President of Conservation, Herb was active with many of the conservation stewardship volunteer projects including honeysuckle removal and tree plantings. He was co-coordinator of St. Louis Audubon's participation in the National Audubon ClimateWatch effort. Herb has been a Board member since 2015 and serves on the Human Resources, Conservation, and Creley Fund Grant committees.



Outstanding Conservationist Award - BiodiverseCity St. Louis

In 2013, the Missouri Botanical Garden facilitated the creation of this "community initiative to promote, protect and plan for biodiversity throughout the greater St. Louis region." The effort has created the Honeysuckle Sweep for Healthy Habitat, the Wild Ideas Worth Sharing speaker series, an organizing partner for the City Nature Challenge and most importantly produced BiomeSTL which is the region's still-evolving biodiversity vision, atlas and action plan. BiomeSTL is part ecological data directory, species inventory, best practices guide and aspirational plan for a bi-state region connected by nature. It is designed to aid urban planners, municipalities, counties, and developers in maximizing the benefits of biodiversity for their respective communities. It is also intended to equip citizens with a greater understanding and appreciation of local biodiversity in ways that promote nature-rich living and advance a culture of community-driven land stewardship.

BiomeSTL
Biodiversity of metropolitan St. Louis

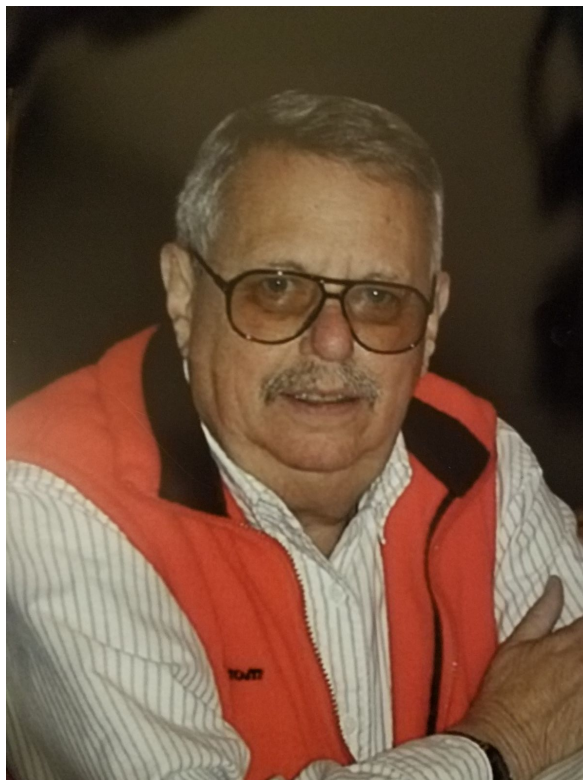
In Memory of Thomas Creley...



Thomas J. Creley, a St. Louis birder and longtime supporter of the St. Louis Audubon Society passed away on August 12, 2019. Tom attended college at Washington University obtaining a BS and MS in Chemical Engineering in 1954 and 1955 respectively. Tom and his wife Cathleen lived in Delaware and St. Louis during his career, and they raised six sons. Upon retirement, Tom and Cathleen returned to St. Louis, also spending time at a residence in Perry County as well.

In the late 1990's Tom developed an interest in birding and met up with Paul Bauer while Paul was leading the St. Louis Audubon field trips at the time. When Paul organized a trip to the Galapagos, Tom signed up with his son Christopher and met John and Nancy Solodar on that 1999 trip. John was on the Audubon Board of Directors already and Tom eventually joined the St. Louis Audubon Society board. Tom donated shares of stock which were combined with an earlier donation to establish the Cathleen Creley Memorial Conservation Fund, named in honor of his late wife. The fund's sole purpose is to support and expand bird conservation projects throughout the St. Louis region and in appropriate wintering habitats. To date, the fund has provided over \$20,000 for those efforts.

Tom offered an open invitation to birders to visit their Perry County residence, which he called "Perco," during spring and summer where he maintained many very busy hummingbird feeders. Tom will be missed by all who knew him. The St. Louis Audubon Society is honored to be part of Tom and Cathleen's legacy, and committed to preserve that perpetual relationship.



Native Plant Expo and Sale

Saturday, September 28th from 9 am to 1 pm
Schlafly Bottleworks in Maplewood

New and Experienced Gardeners Welcome!
Displays, Crafts & Wares for Native Plant Gardens

Buy Plants & Trees for Fall Planting



Missouri Wildflowers Nursery

Pre-orders welcome with pickup at Expo

Forrest Keeling Nursery



Proceeds benefit St. Louis Audubon's

Bring Conservation Home Program

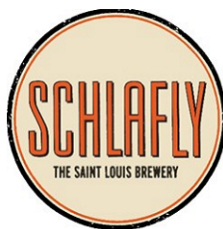
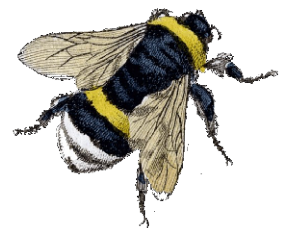
www.stlouisaudubon.org/BCH

Share Seeds or Plants - Missouri Native Only

See grownative.org for an excellent list of natives

Bring plants in pots or bags labeled with the plant name

Hosted by Schlafly Beer
 Schlafly Bottleworks
 7260 Southwest Ave
 Maplewood, MO 63143



THE FALL GAGGLE

SOMETHING TO HOOT ABOUT

An Awards Celebration and Auction
for the St. Louis Audubon Society

Tickets: \$40

- Enjoy hot and cold appetizers, carving station, and pasta!
Includes vegetarian options
- Silent Auction
- Wine Pull
- Music

Register by October 15
at www.stlouisaudubon.org



**SUNDAY
OCTOBER 27, 2019
5 PM TO 8 PM**

Probstein Golf Course at
Forest Park
6141 Lagoon Drive
St. Louis, MO 63112

St. Louis Audubon Society
P.O. Box 220227
St. Louis, MO 63122-0227

Name: _____
Address: _____
City, State, Zip: _____
E-Mail or Phone (if desired): _____
Make checks payable to: St. Louis Audubon Society
Mail Checks to: St. Louis Audubon Society P.O. Box 220227 St. Louis, MO 63122-0227

9/19

ST. LOUIS AUDUBON SOCIETY CHAPTER-SUPPORTING MEMBERSHIP FORM

Mission: to create a community connection to nature through education and conservation.

Your Chapter-Supporting membership runs concurrently with your National Audubon membership, if you choose to maintain the latter. To continue to receive the *Audubon* magazine, you must maintain your National membership.

\$20 \$30 \$50** \$100 Other_____

** Memberships of \$50 or more may choose from these gifts:

Bringing Nature Home by Douglas W. Tallamy
North American Birdfeeder Guide by Stephen Kress
Peterson Field Guide to Birds of Eastern & Central North America

Please indicate your choice.

100% of your dues stay in St. Louis supporting our local efforts. Thank you very much!

If already a Chapter-Supporting member, you need do nothing but accept our thanks!

Memberships are Tax Deductible
Less the \$15 Cost of the Gift